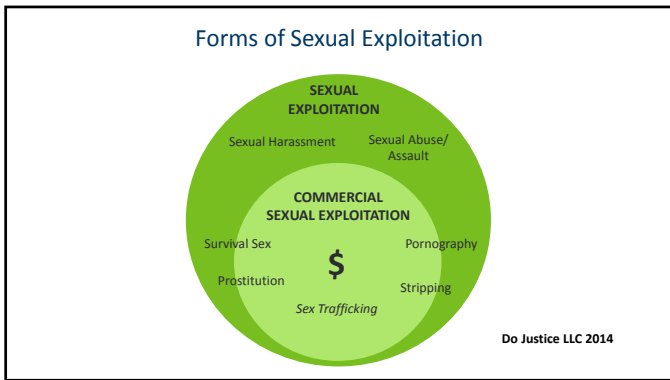




DEPARTMENT OF HEALTH


*Safe Harbor in a Storm:
MN Response for Youth Who Are Sexually Exploited*

Kaitlyn Beise | North Homes **Donna Heck** | Evergreen
Colbi Ikola | North Homes **Paula Schaefer** | MDH



Commercial Sexual Exploitation

Eligibility for Safe Harbor Services for Youth Ages 24 and younger



Anything of value (e.g., money, drugs, food, shelter, rent, or higher status in a gang or group)
 - OR -
 a **promise** of anything of value is given to a person by any means in exchange for any type of sexual activity.

A third party may or may not be involved.

Youth **at-risk** for sexual exploitation are eligible for Safe Harbor Regional Navigator and Specialized Community Services.

<http://www.health.state.mn.us/injury/topic/safeharbor/>

Copyright 2016 SVJ @ MNCASA

Minnesota Sex Trafficking Law

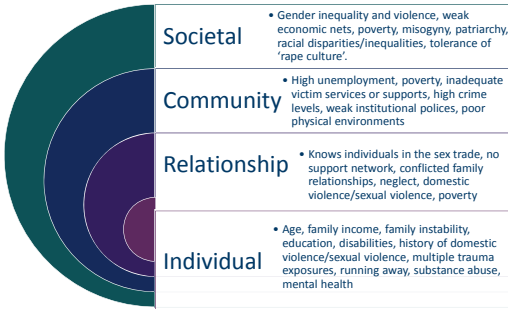
MN. Stat. § 609.321 subd. 7a (1) "receiving, recruiting, enticing, harboring, providing, or obtaining by any means an individual to aid in the prostitution of the individual"

MN. Stat. § 609.321 subd. 7a (2) "receiving profit or anything of value, knowing or having reason to know it is derived from [sex trafficking]."Minn. Stat. § 609.321, subd. 7a.

3/21/2018

4

Sex Trafficking/Exploitation Risk Factors



Potential Signs of Sex Trafficking

- Person has an abrupt change in attire, behavior, or relationships
- The presence of an older "boyfriend" or older female friend
- Travel with an adult who is not a guardian; appears to have people keeping an eye on them
- Sudden presence of expensive material possessions
- Youth lacks control over his/ her schedule, money, and/or proof of identification

Potential Signs of Sex Trafficking

- Lying about age, where they've been, who they've been with, information/stories change
- Youth have unexplained absences from school, or demonstrates an inability to attend school on a regular basis
- Youth has a history of attending many different schools and/or has multiple recent transfers
- Signs of tattoos, physical trauma, including bruises, cuts, burns, and/or scars

 DEPARTMENT OF HEALTH

Minnesota's Response to Sex Trafficking - No Wrong Door



Safe Harbor Law

Sexually exploited youth
17 years old and under
can no longer be criminalized for engaging in prostitution, instead should be referred to services.

Sexually exploited youth
24 years old and under
deserve and are eligible for specialized, trauma-informed services to heal and recover.

Safe Harbor Statewide Services



DEPARTMENT OF HEALTH

- Regional Navigators and Specialized Community Services
- OVC Expansion Grant to include Labor Trafficking
- Training & Technical Assistance
- Youth Outreach Materials
- Wilder Evaluation Report



DEPARTMENT OF HUMAN SERVICES

- Specialized Housing/Shelter
- Youth Outreach
- Child Protection/Child Welfare
- Vulnerable Adult Protection



DEPARTMENT OF PUBLIC SAFETY

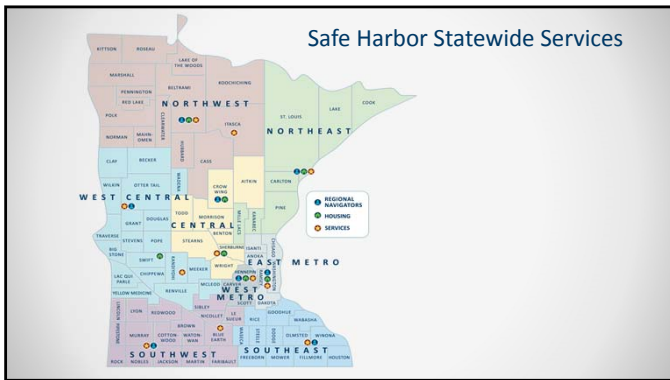
- Missing and Endangered Persons
- Internet Crimes Against Children
- 3 Regional Law Enforcement Task Forces
- 1 Statewide Task Force run by the BCA: 24/7 reporting 651-793-7000
- Training/Consultation for Law Enforcement on Sex Trafficking Investigations



MNCASA
Minnesota Council Against Sexual Assault

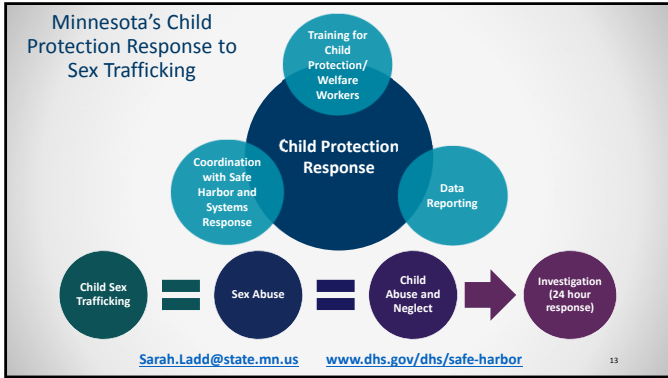
- Protocol Guidelines
- Safe Harbor Protocol Team Formation Starter Kit: A Guide for New Teams
- Protocol Implementation

10



Best Practice Working with Sexually Exploited Youth

- Survivor informed, survivor involvement
- Culturally relevant and responsive
- Trauma-informed and Strength-Based
- Focus on Harm reduction



MINNESOTA ADULT PROTECTION

Where do you report alleged maltreatment of a vulnerable adult (VA)?

Vulnerable Adult Sex/Labor Trafficking

- Mandated Reporters are required to report suspected maltreatment of VA to the MN Adult Abuse Reporting Center (MAARC).
- Anyone can report suspected maltreatment of a vulnerable to MAARC.
- Sex Trafficking = Sexual Abuse 18-24 years of age
- Labor Trafficking = Financial Exploitation

Collaborative Approach

- Adult Protective Services and Safety Planning
- Required law enforcement coordination
- Adult Protection Multi-Disciplinary Teams
- DHS Partners and Providers:
 - <https://mn.gov/dhs/partners-and-providers/policies-procedures/adult-protection/>
 - MAARC: 1-844-880-1574
 - Mandated Reporting Online: mn.gov/dhs/reportadultabuse



NOT A NUMBER
A CHILD TRAFFICKING AND EXPLOITATION
PREVENTION CURRICULUM DEVELOPED BY LOVE146

<https://love146.org/notanumber/>

SAFE HARBOR PRIMARY OUTREACH MATERIALS /

5 X 7 Outreach Card

Business card size outreach cards (2 versions)

Sticker that will fit on a variety of outreach materials

Primary Safe Harbor Posters (2 versions)

Access Safe Harbor Youth Outreach Materials and Communications Toolkit

MDH Website

<http://www.health.state.mn.us/divs/healthimprovement/programs-initiatives/in-communities/safeharbor.html>

Resources

- Minnesota Human Trafficking Task Force
www.mnhttf.org
- Voices of Safe Harbor: Survivor and Youth Input for Minnesota’s Model Protocol on Sexual Exploitation and Sex Trafficking of Youth mncasa.org
- Safe Harbor Website
www.health.state.mn.us/injury/topic/safeharbor/
- StreetWorks Safe Harbor Training Videos
<http://www.streetworksmn.org/video-cats/sh-training-videos/>

 DEPARTMENT OF HEALTH

Questions?

Thank you!

Kaitlyn Beise Kaitlyn.Beise@northhomes.org
 Donna Heck Donna.Heck@evergreenyfs.org
 Colbi Ikola Colbi.Ikola@northhomes.org
 Paula Schaefer Paula.Schaefer@state.mn.us
